

# How to Order a Portrait Package

Welcome to the portrait package ordering process. We have worked hard at creating an easy to use ordering process. This quick reference guide will get you started!

1. Selecting Your Images

2. Creating Your Package

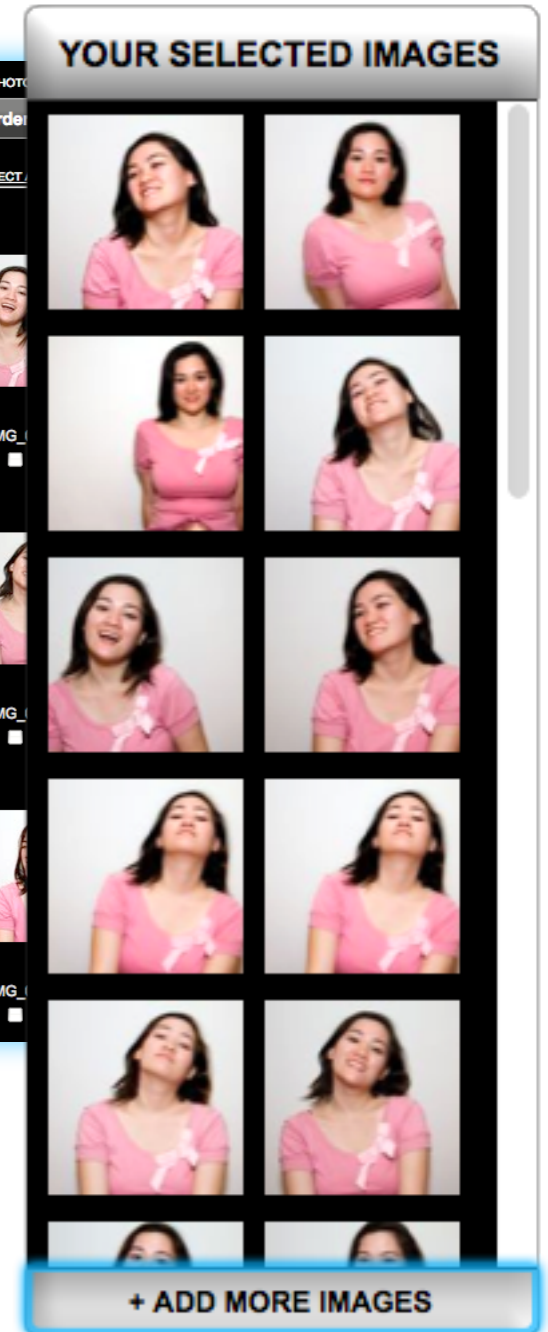
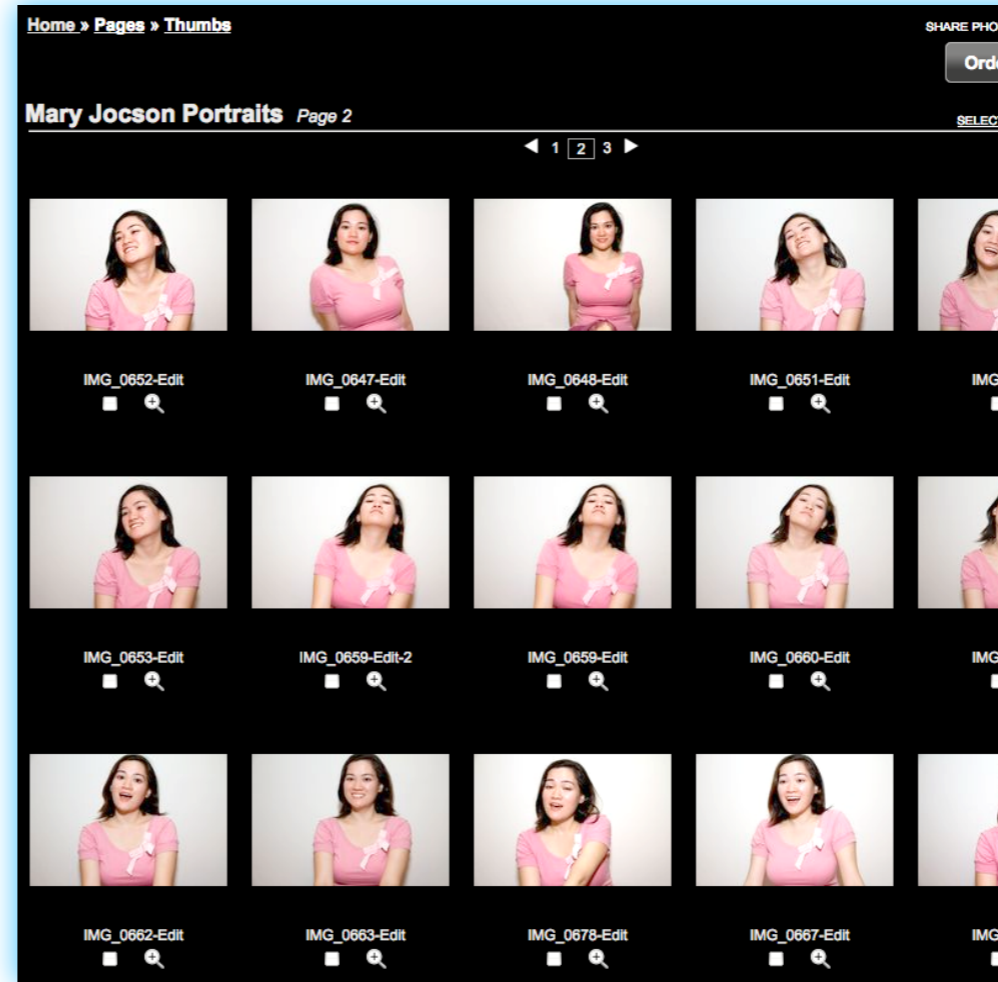
3. Adjusting Your Package

4. Prints, Products, & More

## Selecting Your Images

The images you have selected are visible to you in the Image Selector. If you need additional images at any part of the ordering process, just click on the Add More Image button on the bottom. You will be shown the thumbnail pages again. Review and select the images you wish to add and click on Return to Product to continue the portrait package ordering process.

Select images from the Thumbnail Page ▼



Your selected images show up in the Image Selector. To Add more, click ► on the **+Add More Images** link.

# How to Order a Portrait Package

Welcome to the portrait package ordering process. We have worked hard at creating an easy to use ordering process. This quick reference guide will get you started!

1. Selecting Your Images

2. Creating Your Package

3. Adjusting Your Package

4. Prints, Products, & More

## Creating Your Package

To build the package you have chosen, drag the desired image from the Image Selector into each of the print slots. Or after you have dragged an image into a slot, you can drag an image from one slot to another.

# How to Order a Portrait Package

Welcome to the portrait package ordering process. We have worked hard at creating an easy to use ordering process. This quick reference guide will get you started!

1. Selecting Your Images

2. Creating Your Package

3. Adjusting Your Package

4. Prints, Products, & More

## Adjusting Your Package

The package selections are carefully chosen by your photographer to provide the optimum mix of prints to meet your needs. If you do wish to make minor adjustment the mix of prints in the package, click on the Modify Package link. You will be shown the makeup of the package you are building and be able to change the mix of print sizes by clicking on the Select Print Change drop-down. Verify the modified package print sizes and click on Modify Package to complete the change.

The screenshot displays the 'Adjusting Your Package' interface. On the left, a grid titled 'YOUR SELECTED IMAGES' shows a woman in a pink top and purple skirt in various poses. The main area, 'Build Package A - 3 Poses', shows a grid of 8x10 and 5x7 prints. A 'Modify Package' button is highlighted with a magnifying glass. Below, a 'Modify Package' dialog box is open, showing the current package details and a list of print change options.

**YOUR SELECTED IMAGES**

**Build Package A - 3 Poses**

8 x 10 Print

5 x 7 Print

**Options**

[How to Order](#)

**Modify Package**

**Modify Package**

Cancel Modify Package

Use the drop down to select the print size you would like to change.

**CURRENT PACKAGE**

**Package A - 3 Poses**

- 4: 8 x 10 Prints
- 3: 5 x 7 Prints
- 2: 4 x 6 Prints
- 8: Wallets (8) Die-Cuts

Select Print Change

Select Print Change

- 1 8 x 10 Print -> 2 5 x 7 Print
- 1 8 x 10 Print -> 4 4 x 6 Print
- 1 8 x 10 Print -> 8 Wallets (8) Die-Cut
- 1 5 x 7 Print -> 2 4 x 6 Print
- 2 5 x 7 Print -> 1 8 x 10 Print
- 2 5 x 7 Print -> 8 Wallets (8) Die-Cut
- 2 4 x 6 Print -> 1 5 x 7 Print
- 8 Wallets (8) Die-Cut -> 1 8 x 10 Print
- 8 Wallets (8) Die-Cut -> 2 5 x 7 Print
- 8 Wallets (8) Die-Cut -> 4 4 x 6 Print

# How to Order a Portrait Package

Welcome to the portrait package ordering process. We have worked hard at creating an easy to use ordering process. This quick reference guide will get you started!

1. Selecting Your Images

2. Creating Your Package

3. Adjusting Your Package

4. Prints, Products, & More

## Additional Prints & Products

Once you have completed your package and added it to the cart, you will be able to click on Continue Shipping and use the images you have selected to order additional prints and products for sharing with family and friends.

## Premium Paper

All portrait packages are printed using the premium quality Fuji Crystal Archive Professional Paper Super Type PD. The prints produce excellent skin tone, superb color image stability, life like color reproduction to provide astounding "true-to-life" look for you to enjoy for years to come.